

SEARCH MODES



ALL-TERRAIN

Great for high-trash recreational areas, fields and historical locations including most general detecting.



GENERAL



FAST



CONDUCTORS
LOW



CONDUCTORS
HIGH



TRASH
REJECT



BEACH

Perfect for all salty conditions — dry sand, wet sand, surf and underwater.



GENERAL



CONDUCTORS
LOW



DEEP



SURF &
SEAWATER



GOLDFIELD

Ideal for gold nugget prospecting in mineralised goldfield locations.

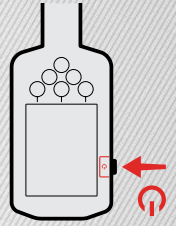


GENERAL

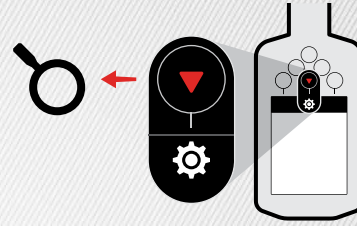


Can't decide which Mode to use?
Use the General Mode for your detecting location.

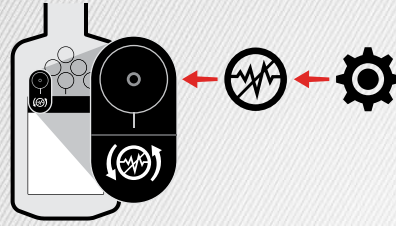
QUICK START



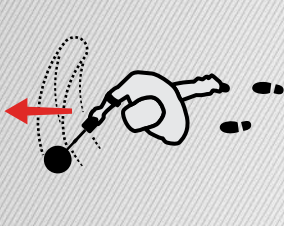
1
TURN
ON



2
SELECT
SEARCH MODE



3
CANCEL
NOISE



4
GO
DETECTING



Scan the QR code or visit www.minelab.com/manticore for all product downloads including the full-length User Manual, specifications, software updates and learning resources.

Get these languages and more:

- EN English
- FR français
- PT Português
- DE Deutsch
- JP 日本語
- RU русский
- ES Español
- KO 한국어
- ZH 中文

For product compliance information:

Settings > General Settings > Compliance

minelab.com

4901-0315-1

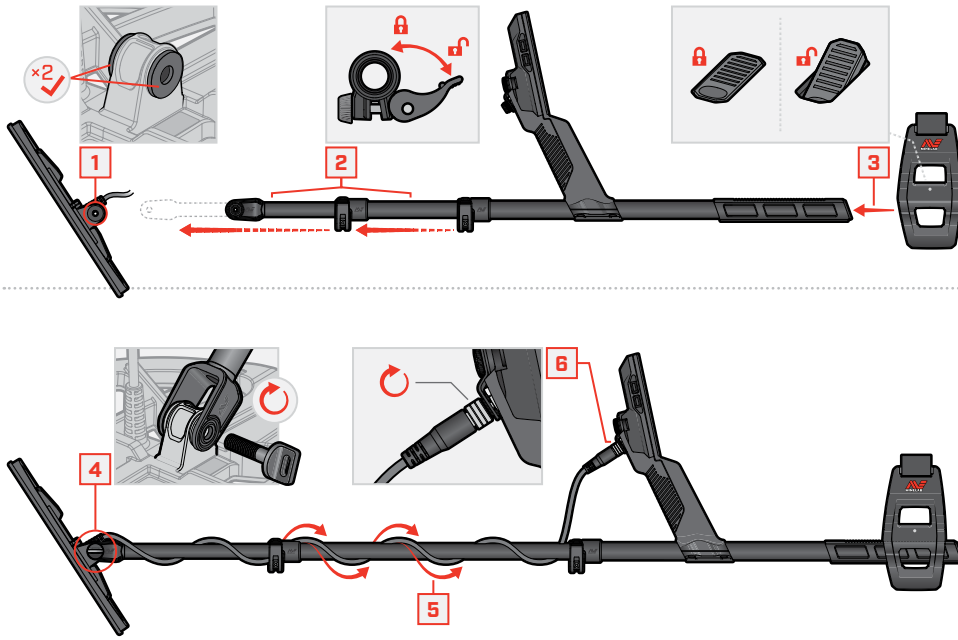


MANTICORE

GETTING STARTED GUIDE



ASSEMBLY



TIGHTEN CAMLOCKS

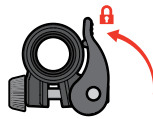
Tighten the Camlocks if they slip or become loose.



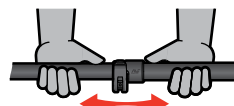
Open



Tighten gently in increments



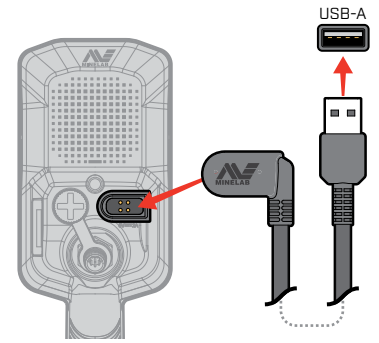
Close



Check and repeat if needed

CHARGING

7-8 HOURS



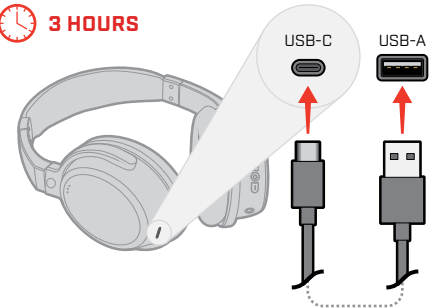
CAUTION: Charge your detector with a good-quality USB charger that has a minimum charging capacity of 2 A @ 5 V. Risk of USB charger failure if a low-quality charger is used.

Look for the following marks on USB chargers:



CAUTION: Only charge the detector in ambient temperatures between 0°C and +40°C.

3 HOURS



CONTROLS & DISPLAY



SETTINGS MENU

Press **▲** from the Detect Screen to open the Settings menu.



Back

- General Settings
- Frequency
- Audio Theme
- Target Tones
- Ferrous Tones
- Ferrous Limits
- Discrimination Pattern
- Recovery Speed
- Ground Balance
- Noise Cancel
- Search Mode
- Volume

Flashlight

Tracking Ground Balance

Wireless Audio

Light Sensor

Headphones Connectivity

Battery Level/Charging

Target ID Number

88	88	00
Conductive ID	Conductive ID with Ferrous Indicator	Salt Indicator (Beach Modes only)

Wireless Audio On/Off

Target Depth Indicator

Side Soft Key

ID MAP

Charge Status LED

Large Metal Overload

Search Mode

Frequency

Power

Sensitivity Level

Backlight/Lighting

Action Bar
Actions/icons change depending on settings or the current screen

Action Bar Soft Keys [x2]

Sensitivity
Press **◀/▶** from the Detect Screen to adjust Sensitivity

Pinpoint
Press **▼** from the Detect Screen to toggle Pinpoint mode

Navigation Arrows [x4]